

CLAY
TALKS



dinaco

01

dinaco Eco Clay

02

dinaco Terra+ Clay

03

dinaco Pearl Clay



ABOUT US

dinaco's Story.

dinaco is a brand that emerges from the essence of PUKACO, a distinguished brand within the PUKACO Group, setting a benchmark in the clay wall finishes industry by seamlessly blending high quality, contemporary elegance, and aesthetic allure inspired by PUKACO. dinaco Pearl Clay exudes luxurious sophistication, while dinaco Terra+ Clay introduces a simple yet luxurious class. dinaco Eco Clay further extends the narrative towards sustainable luxury, portraying dinaco as a representation of premium craftsmanship, going beyond aesthetics to embrace timeless design with a steadfast commitment to a healthy lifestyle

Mission:

dinaco's mission is to redefine awareness of "Clay" by delivering high-quality, aesthetically pleasing effect paint products. The brand is dedicated to providing sustainable options and promoting environmental consciousness within the consumer community.

Vision:

dinaco envisions itself as a leading force in the effect paint industry, setting trends and establishing standards of excellence. The brand aims to seamlessly integrate quality, aesthetics, and trendiness, becoming synonymous with both "luxury" and "sustainability."

Step into a world where quality intersects with sustainability at dinaco. Your choice of dinaco signifies a commitment to beauty and sustainability in every purchase. This message emphasizes that no living space is truly luxurious if it compromises health.

dinaco is more than just a brand; it embodies the fusion of PUKACO heritage with a touch of "Luxurious Sustainability".



Limitless creation

dinadeco



CLAY *talks*

ECO CLAY

ECO *Clay* TALKS

A NEW AGE FOR INTERIOR MATERIALS

dinaco ECO Clay paint is a luxurious, ultra-matt finish for the exterior and interior. Made from eco – friendly clay.

The walls built by dinaco Eco Clay Talks have attracted attention due to their aesthetics. The combination of layers with different earth mixtures results in drawings with waves, natural textures, and beautiful earthy tones. You can create rustic cave-like surfaces or cracked, the structure of dried soil.

dinaco has created a rich choice of shades by combining different colored clays. The available colors allow architects and designers to replicate different styles of rammed earth that are used around the world.





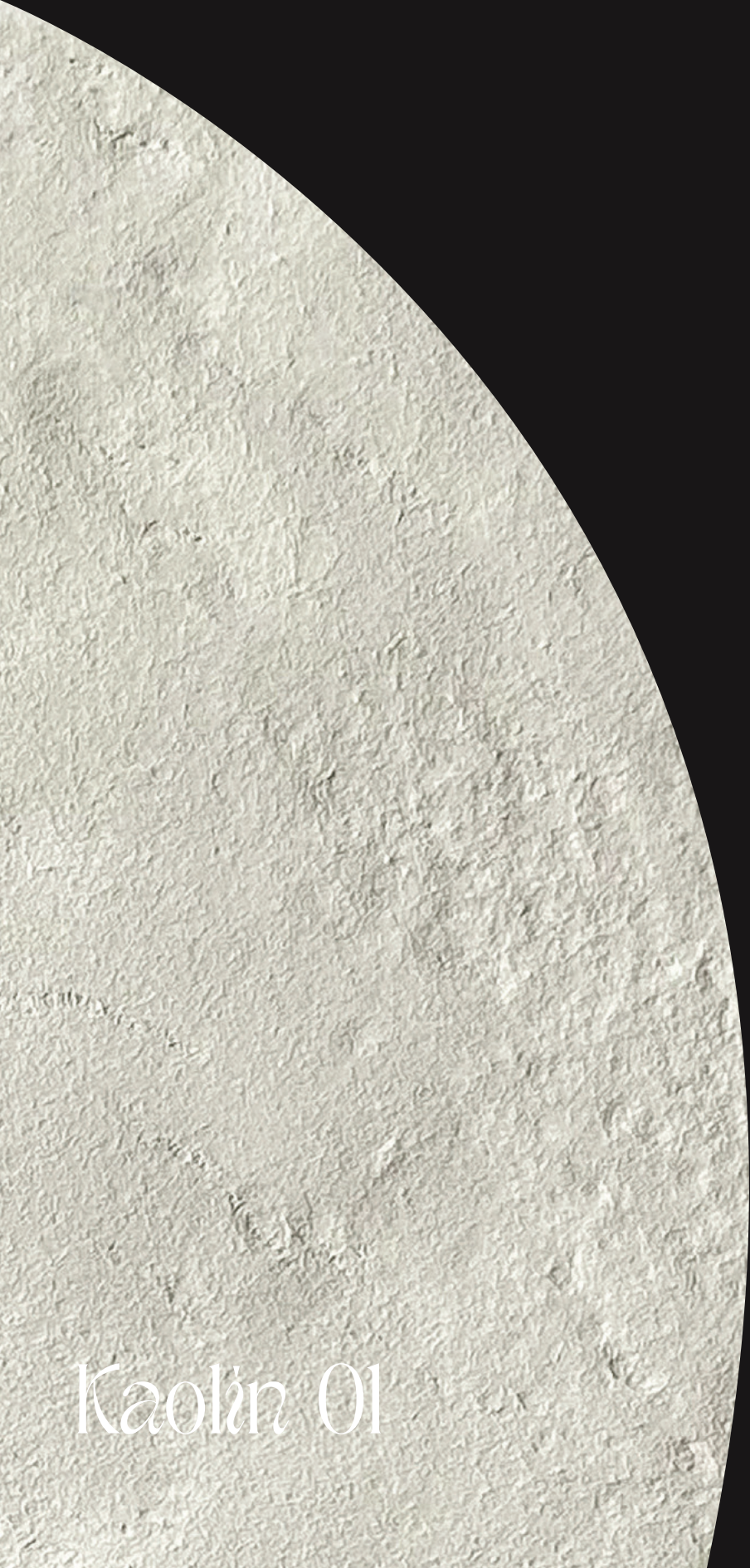
Kaolín

“Inspired by the luxurious kaolín clay of Brazil”



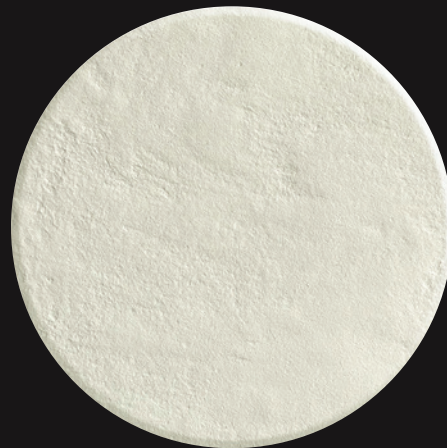
Inspired by the luxurious kaolín clay of Brazil, Kaolín's color leans towards elegant white-gray and beige. The interaction of gray tones in Kaolín clay, depending on the specific source and mineral content, provides varied shades, enriching its color palette. Kaolín clay's inherent qualities make it exceptionally versatile, finding widespread applications across different industries. Its gray color spectrum ranges from subtle shades to distinct tones, contributing to the inherent diversity of this natural clay.

Revered for its gentle and neutral hues, especially pure white, Kaolín clay is a preferred choice in various applications. Notably, variants inspired by Brazil's rich kaolín can introduce earthy yellow tones, adding complexity to the color palette.



Kaolin 01

Kaolin 02



Kaolin 03



Kaolin 04



Kaolin 05



dinaco Eco Clay: 20 New Colors. Beyond Beauty. Setting Trends.

Rhassoul 01



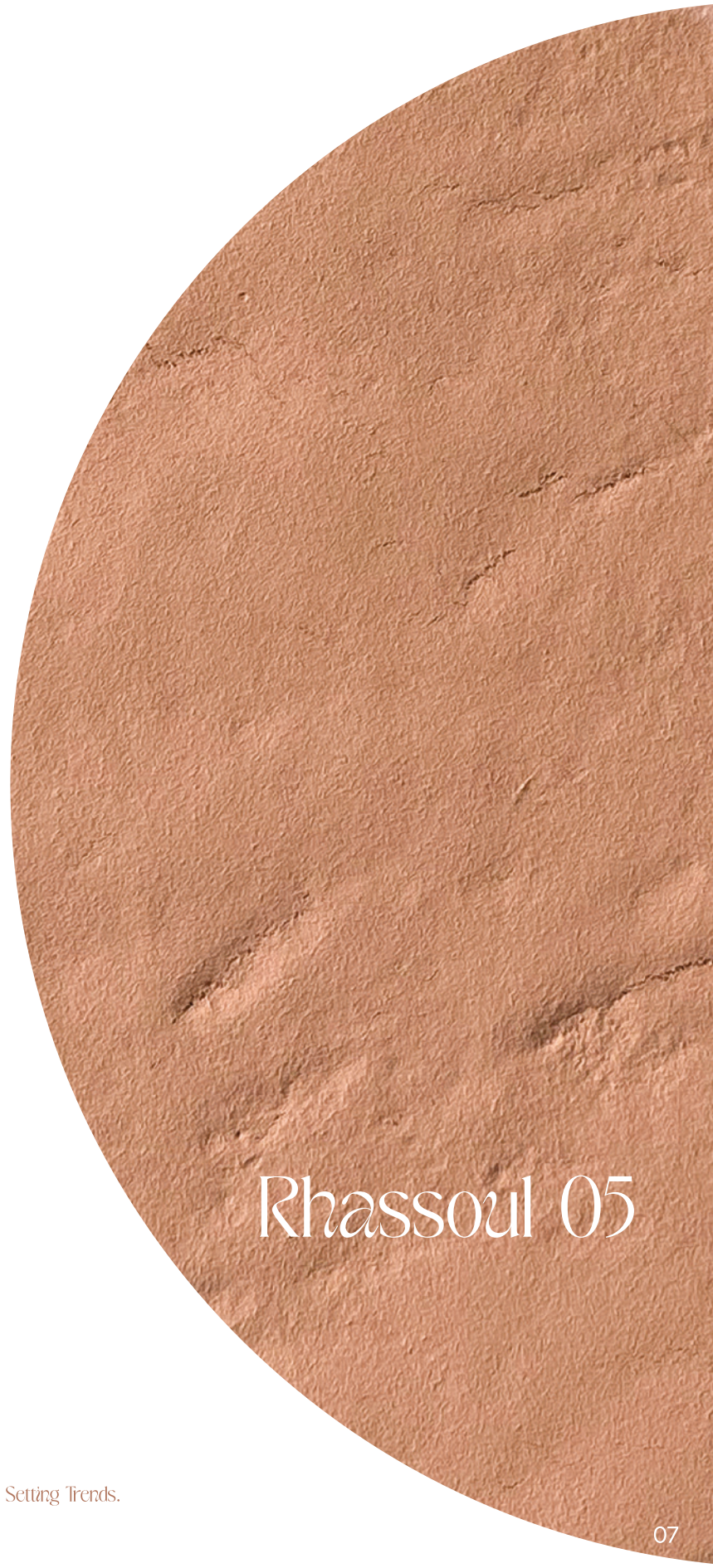
Rhassoul 02



Rhassoul 03



Rhassoul 04



Rhassoul 05

Rhassoul encapsulates the clay symphony of Morocco, known as Moroccan red clay or Ghassoul clay. Rhassoul clay stands out with its natural earthy tones, including red, brown, and pink. From the Atlas Mountains in Morocco, Rhassoul clay boasts a rich color spectrum due to diverse mineral content in the region.

It exhibits a range of captivating earthy tones, blending with the intrinsic mineral composition of the clay. Basic colors intertwine with Rhassoul clay, spanning various shades of red, creating a distinct and earth-like charm.



Rhassoul

“The clay symphony of Morocco”

Ticao

"The vibrant clay colors of the Philippines"

Ticao reflects the vibrant clay colors of the Philippines. The innate color diversity of Ticao clay, shaped by minerals, especially iron oxide, creates a captivating array from vivid terracotta to deep red. Lighter shades signify lower iron content, while darker red hues indicate higher iron concentration.

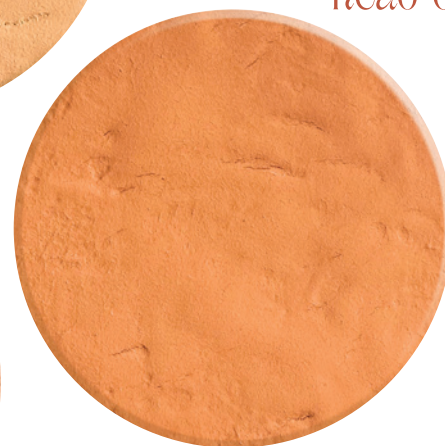




Ticao 04



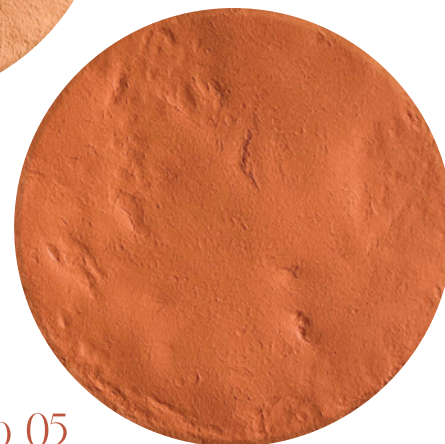
Ticao 01



Ticao 02



Ticao 03



Ticao 05

Bat Trang

"The essence of Vietnam"

"The essence of Vietnam" – portraying the myriad hues of Bat Trang clay from Vietnam. The colorful patterns on Bat Trang clay reflect the deep artistic heritage of the region. Earthy tones dominate, showcasing a diverse color palette from light brownish-yellow to darker shades, intricately expressed by Bat Trang clay. These colors not only demonstrate the perfect craftsmanship of Bat Trang artisans but also reflect the cultural tapestry and historical narrative of ceramic art in Vietnam.

The diverse brown tones, from the subtlety of light shades to the richness of darker hues, contribute to the overall palette and essence of Bat Trang clay.



Bat Trang 01



Bat Trang 02



Bat Trang 03



Bat Trang 04



dinaco Eco Clay: 20 New Colors. Beyond Beauty. Setting Trends.

Bat Trang 05



PHARAOH'S LEGACY

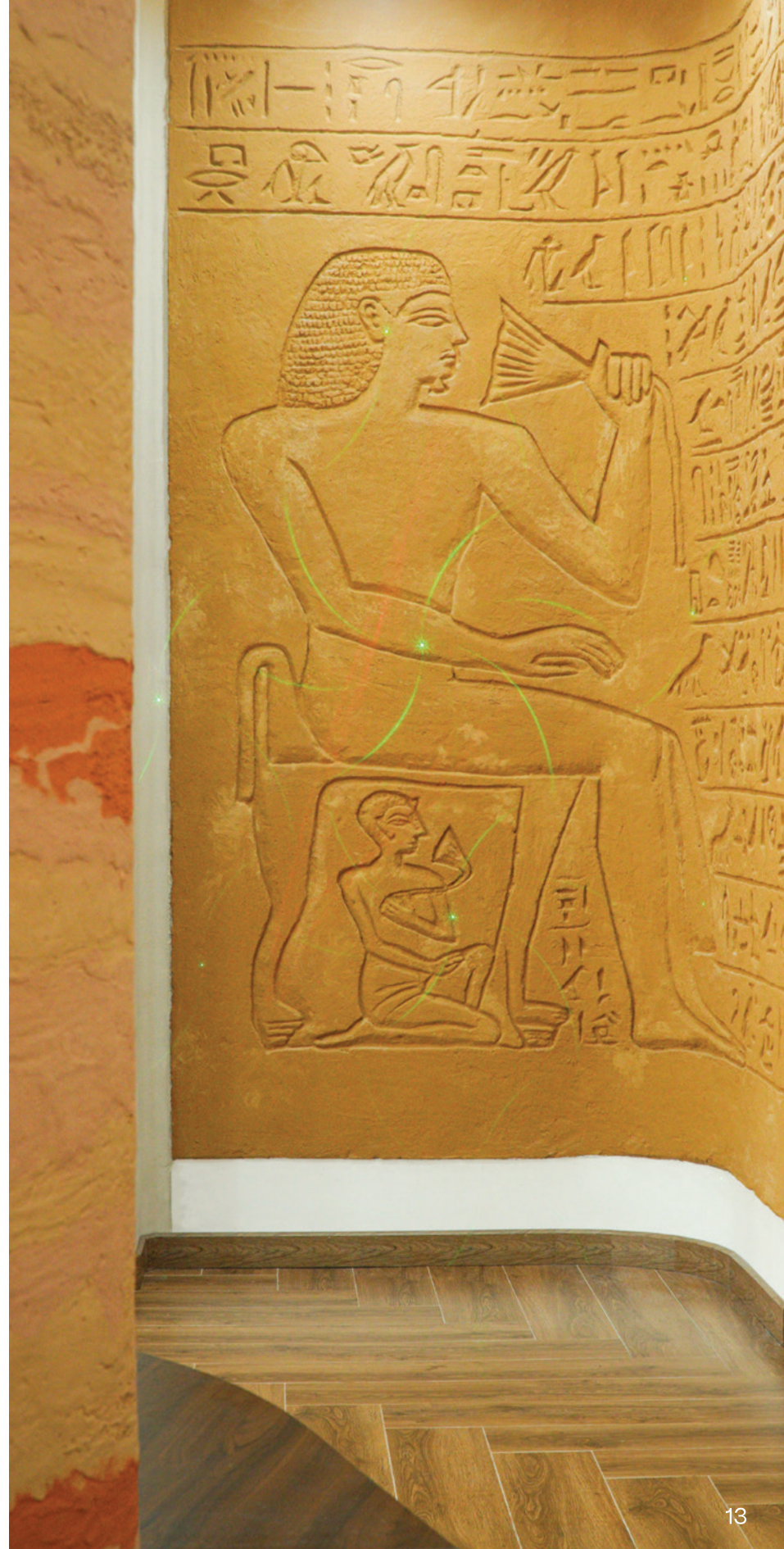
The Heritage Wall, embellished with dinaco's Eco Clay Paint, intricately captures Ancient Egyptian culture, weaving a visual narrative that transcends time and evokes curiosity about the mysteries of the past.

Authentic Reproduction: dinaco's Eco Clay Paint precisely reproduces the intricate beauty of Ancient Egyptian walls, making it ideal for The Heritage Wall, capturing the essence of the culture with precision.

REVIVING THE ANCIENT *Egyptian Walls*

Skillful Application and Intricate Recreation: dinaco's Eco Clay Paint skillfully recreates the distinctive beauty of ancient Arabian walls, unveiling colors reflecting enchanting walls adorned with iconic Hatti letters and symbols, using simple yet effective techniques.

Seamless Integration for Symbolic Connection: The seamless integration of Hatti letters and symbols with dinaco's Eco Clay Paint acts as a symbolic bridge, linking the contemporary space to Egypt's rich historical legacy. This unique material not only enhances aesthetic allure but also symbolically connects the modern environment to the iconic elements of Ancient Egyptian culture, creating a design that transcends time and sparks curiosity.







Rammed EARTH.

dinaco Eco Clay: Replicating Aesthetic
Qualities in Rammed Earth Finishes.

The beauty of Rammed Earth by dinaco Eco Clay lies in its innovative construction technique that mirrors the visual charm of traditional rammed earth walls. Utilizing the alternative material, dinaco Eco Clay, this method achieves a stunning replication of the aesthetic qualities found in rammed earth.

TERRA⁺ Clay TALKS

dinaco Terra+ Clay is the latest specialized decorative wall paint in the field of Wall Finish Effects. With a distinctive composition featuring coarse clay particles, this type of paint is designed to provide a high-quality finish and enhance the aesthetic appeal of concrete walls. Its highlights include durability, aesthetic allure, alignment with the latest trends, and suitability for both indoor and outdoor environments. Notably, the user-friendly application process allows for direct application onto walls, natural textures, and beautiful earthy tones.

The combination of pure clay particles in dinaco Terra+ Clay results in a unique structure, enabling the product to create distinctive decorative effects on walls, resembling natural clay surfaces or Tadelakt. This clay offers a flexible choice to enhance the visual appeal of surfaces, imparting a concrete-like appearance with the addition of coarse particles. Whether used indoors or outdoors, this type of paint opens up creative possibilities for crafting textured and visually rich wall surfaces.





TERRA+ Clay

THE GREY TONES OF DINACO TERRA+ CLAY ARE EXEMPLIFIED ACROSS A RANGE OF CAPTURING OPTIONS, EACH BRINGING ITS OWN UNIQUE CHARM.

Moss 01 – Grey Moss Natural: Capturing the essence of nature, Moss 01 blends grey tones with mossy hues, creating a harmonious and organic feel. This option infuses a touch of the outdoors into interior spaces, offering a serene and calming atmosphere.

Snow 01 – Simplicity of White Grey: In Snow 01, the simplicity of white and grey tones harmonize to create a clean and modern aesthetic. This option adds a sense of purity and brightness to spaces, embodying a minimalist elegance that complements contemporary design styles.

Clay 01 to Clay 08 – Grey Medium Natural Lines: Ranging from Clay 01 to Clay 08, these options showcase medium grey tones with natural lines, providing a subtle and refined appearance. The total grey shades from natural elements contribute to a sophisticated backdrop that seamlessly blends with diverse design styles.

The grey natural tones of dinaco Terra+ Clay, in their various expressions, offer a timeless and versatile palette for interior design. The collection not only reflects an appreciation for simplicity and elegance but also provides a canvas for architects and designers to craft distinctive and inviting spaces.



Snow 01



Clay 01



Clay 02



Clay 03



Clay 04



Clay 07



Clay 08



Clay 05



Clay 06



Moss 01



Sandy 04



Sandy 05



Sandy 02



Sandy 03



Sandy 01



Earth 01



Earth 02



Earth 03



Earth 04



Earth 05

TERRA⁺ *Clay*

THE RUSTIC BEAUTY OF EARTH TONES AND SANDY TONES IS ELEGANTLY PORTRAYED
IN THE DIVERSE OPTIONS OF divine TERRA CLAY

Earth 01 to Earth 05: Natural Warmth of Earth Shades

From Earth 01 to Earth 05, embracing the natural warmth of earth tones. Progressing from terracotta hues to deep, earthy browns, this collection captures the essence of nature's warmth, offering a spectrum that complements various interior design styles.

Sandy 01 to Sandy 05: Shades of Natural Sand

Sandy 01 to Sandy 05 showcase the exquisite beauty of natural sand tones. Reflecting on types of sand and transitioning through tones inspired by the sunrise to sun down, this collection brings the serene and calming qualities of sandy landscapes into interior spaces.





PEARL

CLAY TALKS



dinaco Pearl Clay

The application involves a simple technique: "Gentle strokes make it beautiful." When applied with gentle strokes, the pearl beads in dinaco Pearl Clay move gracefully, reflecting dynamic patterns. Once dried, the beads rearrange into a unique pattern, contributing to a shiny layer that enhances the wall's depth and dimension.

The color palette comprises "110 COLORS," allowing users to tailor their space to individual preferences. This product simplifies the application of special effect paint, providing a cost-effective solution to enhance your space.

dinaco Pearl Clay is a decorative paint that incorporates pearl beads, providing a distinctive and visually appealing finish on interior walls. The addition of pearl elements enhances reflectivity, resulting in a glossy layer that introduces depth and dimension to the wall. This paint is favored in contemporary design for its decorative qualities beyond traditional flat finishes.

The four unique lines – Akoya, South Sea, Tahitian, and Freshwater – each draw inspiration from pearls, introducing distinct charm and narratives to living spaces. Akoya features a neutral gray base, while South Sea emphasizes shades of gold. Tahitian is inspired by black pearls with a range of blue shades, and Freshwater introduces modern pink and orange-pink hues.

dinaco Pearl Clay offers an easy application process, making it suitable for professionals, DIY enthusiasts, and first-time homeowners. The product's versatility accommodates various interior design styles, from luxurious to classic, making it accessible to a broad audience.

In essence, dinaco Pearl Clay transforms spaces into havens of warmth and luxury, capturing the sophistication of natural pearls. It serves as both paint and a canvas for aspirations, redefining luxury in interior design.

TAHITIAN PEARL

Captivating Elegance: Tahitian Pearl-Inspired Hues with dinaco Pearl Clay

Discover the allure of the dinaco Pearl Clay color shades, inspired by the mesmerizing beauty of Tahitian Pearls. This collection unveils a captivating palette that mirrors the unique and intense characteristics of these natural treasures, bringing a touch of luxury and mystery into your living spaces.

1. Dark Elegance:

Embrace sophistication and mystery with the enchanting dark shades inspired by Tahitian pearls. This color adds an elegant touch to any space, creating an atmosphere of refined allure.

2. Oceanic Charcoal:

Drawing inspiration from the deep and mesmerizing hues of Tahitian pearls, the charcoal shade introduces a sense of depth and tranquility. Transform your space into a serene oasis reminiscent of the tranquil ocean waters surrounding Tahiti.

3. Midnight Blue Noir:

Indulge in drama and opulence with the midnight blue shade, reflecting the rich blue tones found in Tahitian pearls. Make a bold statement in interior design, infusing your space with a sense of luxury and sophistication.



Tahitian-01
Sơn Đất Sét Ngọc Trai dinaco



Tahitian-02
Sơn Đất Sét Ngọc Trai dinaco



Tahitian-03
Sơn Đất Sét Ngọc Trai dinaco



Tahitian-04
Sơn Đất Sét Ngọc Trai dinaco



Tahitian-05
Sơn Đất Sét Ngọc Trai dinaco



Tahitian-06
Sơn Đất Sét Ngọc Trai dinaco



Tahitian-07
Sơn Đất Sét Ngọc Trai dinaco



Tahitian-08
Sơn Đất Sét Ngọc Trai dinaco



Tahitian-09
Sơn Đất Sét Ngọc Trai dinaco



Tahitian-10
Sơn Đất Sét Ngọc Trai dinaco





freshwater-02
Sơn Đất Sét Ngọc Trai dinaco



freshwater-03
Sơn Đất Sét Ngọc Trai dinaco



freshwater-04
Sơn Đất Sét Ngọc Trai dinaco



freshwater-05
Sơn Đất Sét Ngọc Trai dinaco



freshwater-06
Sơn Đất Sét Ngọc Trai dinaco



freshwater-07
Sơn Đất Sét Ngọc Trai dinaco



freshwater-08
Sơn Đất Sét Ngọc Trai dinaco



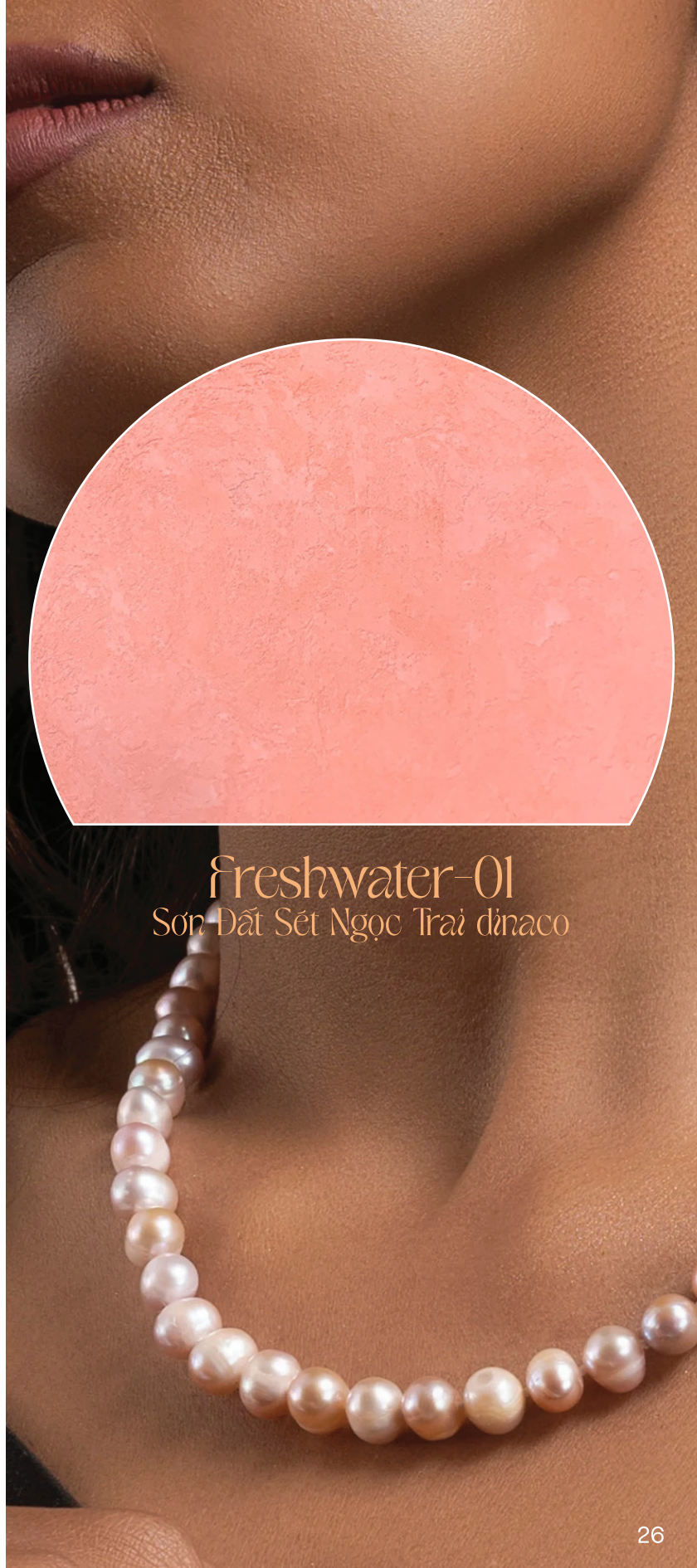
freshwater-09
Sơn Đất Sét Ngọc Trai dinaco



freshwater-10
Sơn Đất Sét Ngọc Trai dinaco



freshwater-01
Sơn Đất Sét Ngọc Trai dinaco





FRESHWATER PEARL

Timeless Elegance: Unveiling the Beauty of Freshwater Pearl Inspired Decor

Unveiling Elegance: The Freshwater Pearl Inspired Hues of dinaco Pearl Clay introduces a transformative decorative paint that draws inspiration from the captivating shades of Freshwater pearls. Dive into the world of the Freshwater line, where modern pink and orange-pink hues take center stage, offering a rich palette for interior walls. Infuse elegance into living spaces with the glossy layer of dinaco Pearl Clay, creating a finish that radiates depth and dimension reminiscent of lustrous Freshwater pearls. Tailor your space with a spectrum of colors, reflecting global influences and cultural richness. Affordable luxury meets aesthetic appeal, making dinaco Pearl Clay a transformative experience that brings the sophistication of Freshwater pearls into your home.

Elevate your space with timeless beauty and elegance.

The color palette of dinaco Pearl Clay is inspired by Akoya Pearl, bringing a sophisticated and neutral range drawn from the elegance of natural Akoya pearls. The Akoya-inspired color line features a variety of tones centered around a neutral gray base, capturing the timeless and classical essence of Akoya pearls.

AKOYA PEARL

1. Neutral Gray:

This is the foundational color in the Akoya-inspired color line, reflecting the classic and versatile nature of Akoya pearls. This neutral gray serves as the basis for an elegant space, creating a timeless aesthetic.

2. Eternal Gray-White:

Emulating the pure essence of Akoya pearls, this bright white shade adds purity and luminosity to the palette, creating a sense of elegance and simplicity.

3. Subtle Mist:

Drawing inspiration from the misty and enchanting qualities of Akoya pearls, this light shade adds a touch of softness and mystery to the collection.

The color shades inspired by Akoya Pearl in dinaco Pearl Clay aim to capture the essence of Akoya pearls, offering a refined and versatile palette for interior wall finishes. These hues create a timeless backdrop, conveying a subtle beauty and sophisticated elegance reminiscent of natural Akoya pearls.



Akoya-02
Sơn Đất Sét Ngọc Trai dinaco



Akoya-03
Sơn Đất Sét Ngọc Trai dinaco



Akoya-04
Sơn Đất Sét Ngọc Trai dinaco



Akoya-05
Sơn Đất Sét Ngọc Trai dinaco



Akoya-06
Sơn Đất Sét Ngọc Trai dinaco



Akoya-07
Sơn Đất Sét Ngọc Trai dinaco



Akoya-08
Sơn Đất Sét Ngọc Trai dinaco



Akoya-09
Sơn Đất Sét Ngọc Trai dinaco



Akoya-10
Sơn Đất Sét Ngọc Trai dinaco



Akoya-01
Sơn Đất Sét Ngọc Trai dinaco





Southsea-01
Sơn Đất Sét Ngọc Trai dinaco


dinaco Clay Talks



Southsea-02
Sơn Đất Sét Ngọc Trai dinaco



Southsea-03
Sơn Đất Sét Ngọc Trai dinaco



Southsea-04
Sơn Đất Sét Ngọc Trai dinaco



Southsea-05
Sơn Đất Sét Ngọc Trai dinaco



Southsea-06
Sơn Đất Sét Ngọc Trai dinaco



Southsea-07
Sơn Đất Sét Ngọc Trai dinaco



Southsea-08
Sơn Đất Sét Ngọc Trai dinaco



Southsea-09
Sơn Đất Sét Ngọc Trai dinaco



Southsea-10
Sơn Đất Sét Ngọc Trai dinaco

SOUTHSEA PEARL

dinaco Pearl Clay Collection: A Radiant Symphony Inspired by South Sea Pearls

The dinaco Pearl Clay collection introduces a stunning array of color shades, drawing inspiration from the natural beauty of South Sea Pearls. This essay delves into the exquisite palette that mirrors the opulence of South Sea pearls, capturing their unique and radiant hues.

Golden Radiance:

The warm and lustrous "Golden Radiance" shade within the collection mimics the radiant hues observed in South Sea pearls. Infusing opulence into the palette, this golden tone unveils the richness associated with these pearls, creating a captivating and luxurious atmosphere.

Golden Elegance:

"Golden Elegance" takes inspiration from the gold and white tones distinctive to South Sea pearls. This shade embodies a sense of elegance and sophistication, contributing to a refined and timeless aesthetic. It transforms spaces into realms of grace and beauty, echoing the opulent allure of these precious gems.

Light Soft Golden:

Capturing the mesmerizing blue shades found in some South Sea pearls, the "Light Soft Golden" hue introduces depth and tranquility to the color collection. This deep and captivating shade not only enriches the palette but also adds a serene ambiance to interior spaces, reflecting the calming essence of South Sea pearls.





dinaco, the subs brand of PUKACO Group – owning the world’s most beautiful paint store.

